

2019 Sanitary Sewer Overflow and Reduction Program (SSORP) Engineering Design Services

Antonio Leyva, P.E.

Engineering Manager

Christopher J. Jackson, P.E.

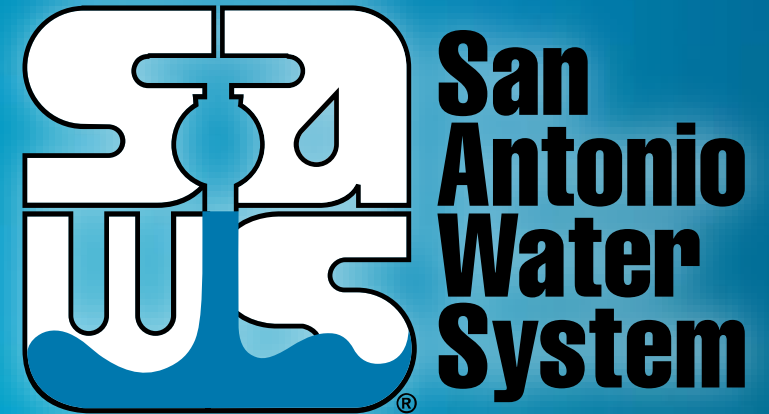
Project Engineer

Marisol V. Robles

Manager – SMWVB Program

Stella Manzello

Contract Administrator



Non-Mandatory Pre-Submittal Meeting

August 13, 2019

MAKING SAN ANTONIO
WATERFUL



Oral Statements

Oral statements or discussion during this Pre-Submittal Meeting will not be binding, nor will they change or affect the RFQ or the terms or conditions of the contract. Changes, if any will be addressed in writing only via an Addendum.

Presentation Overview

- Objective
- SMWVB
- Additional Requirements
- Submission Restrictions
- Selection Process
- Evaluation Criteria
- Submission Reminders
- Key Dates
- Submittal Deadline
- Negotiations
- Communication Reminders
- Project Matrix
- Project Charters
- Technical Information
- Key Considerations
- Questions

Objective

- Provide professional engineering design services, as well as all associated engineering services necessary to advance sanitary sewer overflow and reduction program projects
 - Includes both bid and construction phase services
- The projects included in this RFQ represent Condition Project Packages required to meet Consent Decree (CD) requirements

Aspirational SMWB Goal

Aspirational SMWB Goal	Description
40%*	Points assessed on a tiered scale + special scoring

*The aspirational goal is expressed as a percentage of the total value of the contract.

SMWVB Requirements for

- SMWVB Certification accepted from the following entities:
 - South Central Texas Regional Certification Agency & Texas H.U.B.
- Accepted Certifications:
 - Small Business Enterprise (SBE)
 - Minority Business Enterprise (MBE)
 - Woman-owned Business Enterprise (WBE)
- Other Requirements
 - Organizational Chart = Good Faith Effort Plan.
 - **Local**
 - SPUR System

Small, Minority, and Woman-owned Businesses (SMWB) Participation

Addendum

- M/WBE Scoring Method: **Up to 10 Points (By percentage) 40.00% M/WBE Goal**
 - M/WBE Participation Percentage between 1% and 9.99%: **2 Points**
 - M/WBE Participation Percentage between 10% and 19.99%: **4 Points**
 - M/WBE Participation Percentage between 20% and 29.99%: **6 Points**
 - M/WBE Participation Percentage between 30% and 39.99%: **8 Points**
 - M/WBE Participation Percentage meeting or exceeding 40.00%: **10 Points**
- Utilization of a local SMWB Engineering Firm, that has not worked with SAWWS before as a prime consultant, for 10% of Sewer Design Services: **5 Points**

Post Award: Subcontractor Payment & Utilization Reporting (S.P.U.R.) System & Subcontractor Changes

<https://saws.smwbe.com>



Good Faith Effort Plan (GFEP) FAQs

- **Q: Is the 40% SMWB goal mandatory?**

A: No, but it is weighed in the selection criteria, and SAWS asks Respondents to do their best with good faith outreach efforts. If the goal is not met, proof of outreach efforts is required with the submittal.

- **Q: What if I am having trouble finding SMWB subconsultants?**

A: Please email the SMWVB Program Manager with the scopes of work you are seeking. You will receive lists of local SMWVB-certified firms to contact from the SCTRCA database.

- **Q: What if my business is SMWB-certified? Do I need to find SMWB subs?**

A: If your firm is SMWB-certified, you will most likely meet the goal. However, the GFEP is a required document, and a good faith outreach effort is still necessary.

- **Q: Do I need to include all subconsultants in the GFEP, or just SMWB-certified subconsultants?**

A: All subconsultants need to be included in the GFEP. The GFEP and organizational chart need to match.

- **Q: What if I have questions about the GFEP?**

A: Please contact the SMWVB Program Manager at (210) 233-3420, or at marisol.robles@saws.org. GFEP questions can be asked at any time before the submittal is due.

Questions related to the SMWVB Program, completion of the Good Faith Effort Plan (GFEP), or SMWVB scoring may be directed to the SMWVB Program Manager, up until the RFQ is due. Contact information:

Marisol V. Robles

SMWVB Program Manager

Email: Marisol.Robles@saws.org

Telephone: 210-233-3420

Requirements and Restrictions – Additional Requirements

- Will perform all project-related functions utilizing Contract and Project Management System (CPMS)
 - Including adhering to specified service levels for processing change orders, RFIs, RFPs, and scratch sheets
- Familiar with the consent decree
 - Certain actions to rehabilitate the wastewater collection system to reduce SSOs
- Meet all milestones and adhere to the project schedule as published

Requirements and Restrictions – Submission Restrictions

- SSORP Program Manager, HDR, may not submit for this RFQ
 - Sub-consultants eligible to service as a sub or prime consultant
 - Please refer to Section II, D. Submission Restrictions, 1 in the RFQ
- BPCs are not eligible to submit for this RFQ (either as a prime or sub consultant) which are part of the alternative analysis work in the sewershed where they served as BPC.
 - Please refer to Section II., D. Submission Restrictions, 2 in the RFQ
 - Sub-consultants on a BPC team may submit if their work did not or will not exceed 15% of the total BPC's contract value
 - Contact Marisol Robles, SMWVB Program Manager, for verification

Selection Process

- SOQs reviewed for responsiveness
- Technical Evaluation Committee scores qualification statements based on evaluation criteria published in the RFQ
- Interviews held, if necessary
- Selection Committee reviews scores and recommends firms
- Good Faith Effort Plan evaluated and scored
- Negotiation with selected consultants
- Board Award

Evaluation Criteria

CRITERIA	MAX POINTS
Team Experience and Qualifications	20
Similar Projects and Project Performance	25
Project Approach	30
Quality Management/Quality Control	10
Small, Minority, Woman, and Veteran-owned (SMWVB) Business Participation	15

Evaluation Criteria – Team Experience and Qualifications (20 points)

- 1) Organizational Chart – Page Limit 1
 - All key team members (including key sub-consultants)
 - Project Manager, Cost Estimator, Quality Assurance and Quality Control Review Lead and Reviewers, and all Design Team Leads required
 - Role and percentage of time each key team member will be committed
 - Ensure sub-consultants match those listed on the Good Faith Effort Plan
- 2) Resumes for Key Personnel Only – Page Limit 8
 - Project Manager, Cost Estimator, Quality Assurance and Quality Control Review Lead and Reviewer, and Design Team Leads (no more than 3 Design Team Leads)
 - Resumes should not include exhaustive list of projects, but rather projects relevant to scope of services in the RFQ and their role in that project
- 3) Describe firm's most relevant experience using Subconsultant Table

No additional narrative required

Evaluation Criteria – Similar Projects and Past Performance (25 points)

- 1) Complete Project Table for 5 Relevant Projects, of Similar Size and Scope to projects in the RFQ (5 page limit)
 - Similar projects are wastewater/ SSO projects of similar scope, pipe diameter and contract value
 - Identify key personnel and their roles and responsibilities for at least 3 of the 5 projects
 - A minimum of 3 projects must be performed by Respondent
 - Ensure contact information for references is correct and valid
- 2) Complete OPCC Table
 - 5 Relevant Projects and 3 additional projects, as it relates to the accuracy of OPCC and change orders

No additional narrative required

Evaluation Criteria – Project Approach (30 points)

- This criteria is weighted the heaviest
- Narrative format limited to a 6 page response for 3 questions to include:
 - 1) Describe team's approach to complete the project managing risk between design related issues, constructability and budget
 - Respondent should select 1 of the projects identified and use it to address unique circumstances
 - 2) Identify team's suggested alternative innovative approaches to accomplishing the scope of services identified
 - 3) Describe team's approach to preparing deliverables to meet deadlines
 - Include schedule risks and mitigation measures, schedule recovery approach and other issues relative to schedule maintenance on similar projects

Evaluation Criteria – Quality Management/Quality Control Plan (10 points)

- Narrative format limited to 2 pages
- Includes:
 - Overview of the QCP process and schedule
 - Plan identifying, tracking and resolving design issues
 - Describe how independent quality review team will confirm biddability/constructability
 - Role compared to SAWS' role
 - Approach to becoming familiar with local construction practices and requirements
 - Outline how accuracy and completeness of independent cost estimates are derived for each phase of design

Submission Reminders

- Submit hard copies (1 original and 8 copies)
- Include USB flash drive or CD of the original proposal (all pages)
- Reference the RFQ on additional required items
- Must submit using Evaluation Criteria Forms where indicated
- Use 8 1/2 x 11 portrait format
- Thoroughly read the RFQ to ensure Respondent is familiar with scope
- Be very specific and avoid “boiler plate” responses for narrative responses
- Utilize the Submittal Response Checklist
- Contact the SMWVB Program Manager for assistance, if necessary
- Perform QA/QC on proposal prior to submitting

Key Dates

Date	Action
RFQ Released	July 31, 2019
Written Questions Due	August 22, 2019 by 4:00 p.m.
Q & A Posted to Website	August 27, 2019 by 10:00 a.m.
Proposals Due	September 5, 2019 by 2:00 p.m.
Proposals Evaluated	September – October 2019
Interviews, if necessary	October 2019
Negotiations	October-November 2019
SAWS Board Consideration and Award	January 2020
Start Work	January 2020

**The dates listed above are subject to change without notice*

Submittal Deadline

- Solicitation number, solicitation name, date and time of the deadline should be clearly identified on the outside of the package
- Deliver to 2800 U.S. Highway 281 North, Customer Service Building
 - Deliver to Counter Services
 - SAWWS recommends submitting proposals at least 2 hours prior to the deadline
 - Make arrangements early if mailing a response
- Late responses will not be accepted and will be returned unopened

Communication Reminders

- There should not be any communication regarding this solicitation with the following:
 - SAWS Project Manager
 - SAWS Technical Representative
 - Any other SAWS staff, managers, directors, or VPs
 - City Council member or staff
 - SAWS Board of Trustees
- This includes phone calls, emails, letters, or any direct or indirect discussion of the RFQ
- This is in place from release of the RFQ to Board Award

Questions

- Must be submitted in writing by August 22, 2019 by 4:00 P.M.
via e-mail to:

Stella Manzello

Contract Administration Department

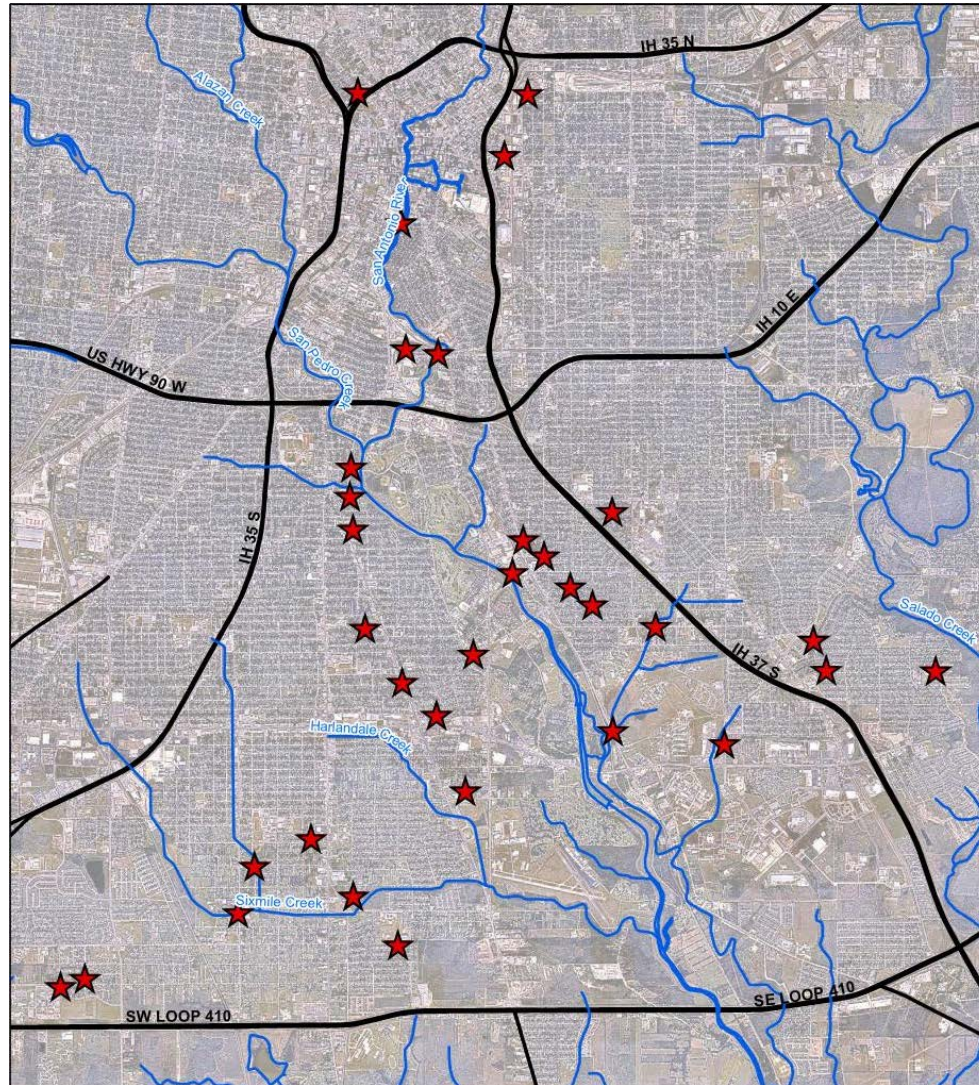
San Antonio Water System

Stella.Manzello@saws.org

Project Matrix

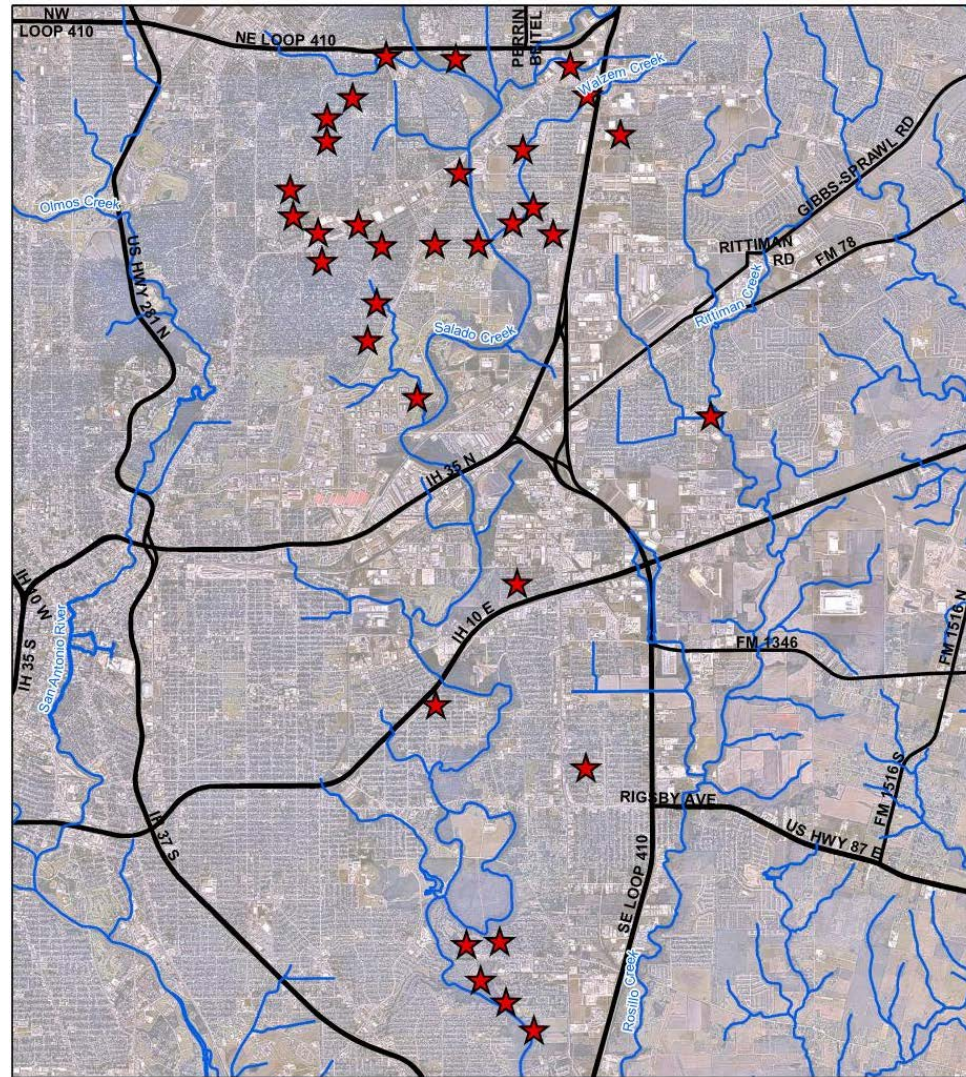
Project Name	BPC CENTRAL SEWERSHED PACKAGE 3	BPC EAST SEWERSHED PACKAGE 4	BPC WEST SEWERSHED PACKAGE 5	BPC CENTRAL SEWERSHED PACKAGE 6	CENTRAL SEWERSHED PACKAGE 10 (TERRELL HILLS)	MULTIPLE SEWERSHED PACKAGE 16	MULTIPLE SEWERSHED PACKAGE 17	MULTIPLE SEWERSHED PACKAGE 18
Project ID	Pro - 11278	Pro - 11279	Pro - 11281	Pro - 11282	Pro - 11187	Pro - 11283	Pro - 11284	Pro - 11286
Design Schedule	January 2020 - April 2021	January 2020 - April 2021	January 2020 - April 2021	January 2020 - April 2021	January 2020 - March 2021	January 2020 - February 2021	January 2020 - April 2021	January 2020 - March 2021
Est. Construction Cost	\$4.00M	\$4.60M	\$3.00M	\$3.20M	\$1.51M	\$1.92M	\$5.50M	\$9.76M
6"-21" diameter pipe	X	X	X	X	X	X	X	X
24"+ diameter pipe		X	X					X
Description	The purpose of this package is to rehab sewer segments in poor condition that have been committed to the condition remedial measures plan. Renewal methods include 0.86 miles of Pipeburst and 0.33 miles of Open cut; 0.76 miles will be rehabilitated via CIPP.	The purpose of this package is to rehab sewer segments in poor condition that have been committed to the condition remedial measures plan. Renewal methods include 1.miles of Pipeburst and 2.miles of Open Cut; 0.75 miles will be rehabilitated via CIPP.	The purpose of this package is to rehab sewer segments in poor condition that have been committed to the condition remedial measures plan. Renewal methods include 0.96 miles of Pipeburst and 0.18 miles of Open Cut; 1.93 miles will be rehabilitated via CIPP	The purpose of this package is to rehab sewer segments in poor condition that have been committed to the condition remedial measures plan. Renewal methods include 0.44 miles of Pipeburst and 0.32 miles of Open Cut; 2.50 miles will be rehabilitated via CIPP.	This purpose of this package is to rehab sewer segments in poor condition that have been committed to the condition remedial measures plan. Rehabilitation method include 0.65 miles of CIPP.	This purpose of this package is to rehab sewer segments in poor condition that have been committed to the condition remedial measures plan. Rehabilitation method include 2.85 miles of CIPP.	The purpose of this package is to rehab sewer segments in poor condition that have been committed to the condition remedial measures plan. Renewal methods include 3.23 miles of Pipeburst and 1.08 miles of Open Cut.	The purpose of this package is to rehab sewer segments in poor condition that have been committed to the condition remedial measures plan. Rehabilitation method include 2.58 miles of sewer segments via CIPP. Installation of 0.62 miles of new pipe via Open Cut, and 0.81 miles of pipe to abandon.

BPC Central Sewershed SD Package 3



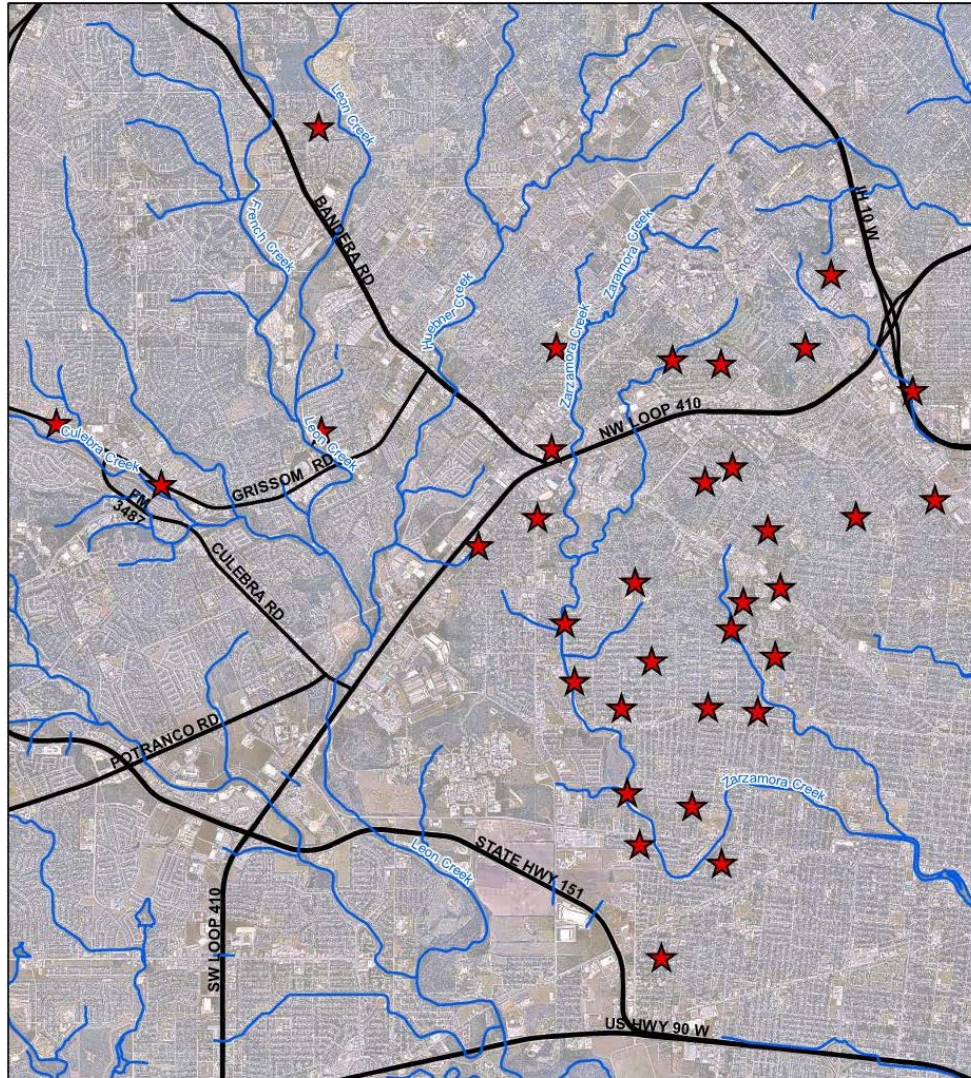
- Location:
 - Multiple locations throughout the Central Basin
- Pipe Diameter:
 - 6-inch thru 18-inch
- Project Length:
 - Approximately 10,283 feet
- Rehab Method:
 - Pipeburst, Open Cut, and CIPP
- Estimated Construction Cost:
 - Not to exceed \$4,000,000

BPC East Sewershed Package4



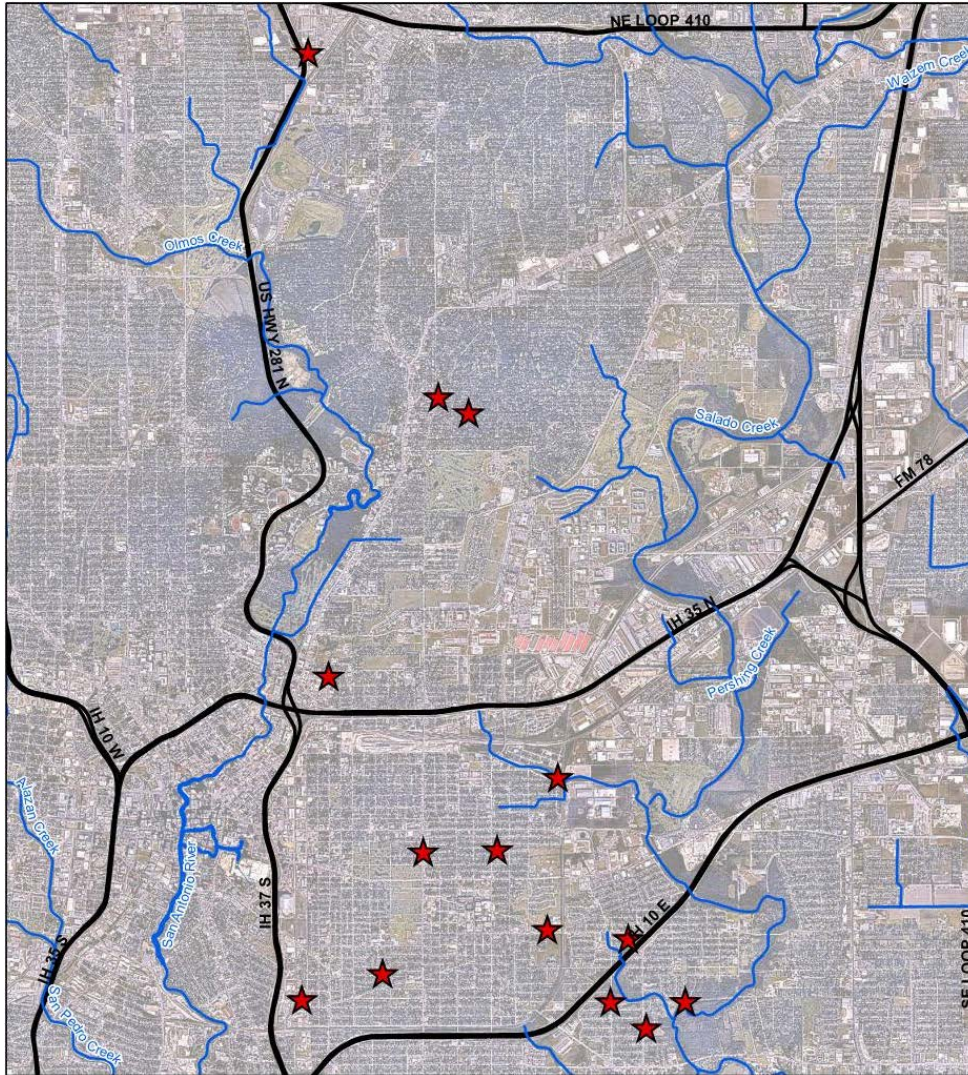
- Location:
 - Multiple locations throughout Eastern Basin
- Pipe Diameter:
 - 6-inch thru 24-inch
- Project Length:
 - Approximately 14,555 feet
- Rehab Method:
 - Pipeburst, Open Cut, and CIPP
- Estimated Construction Cost:
 - Not to exceed \$4,600,000

BPC West Sewershed Package 5



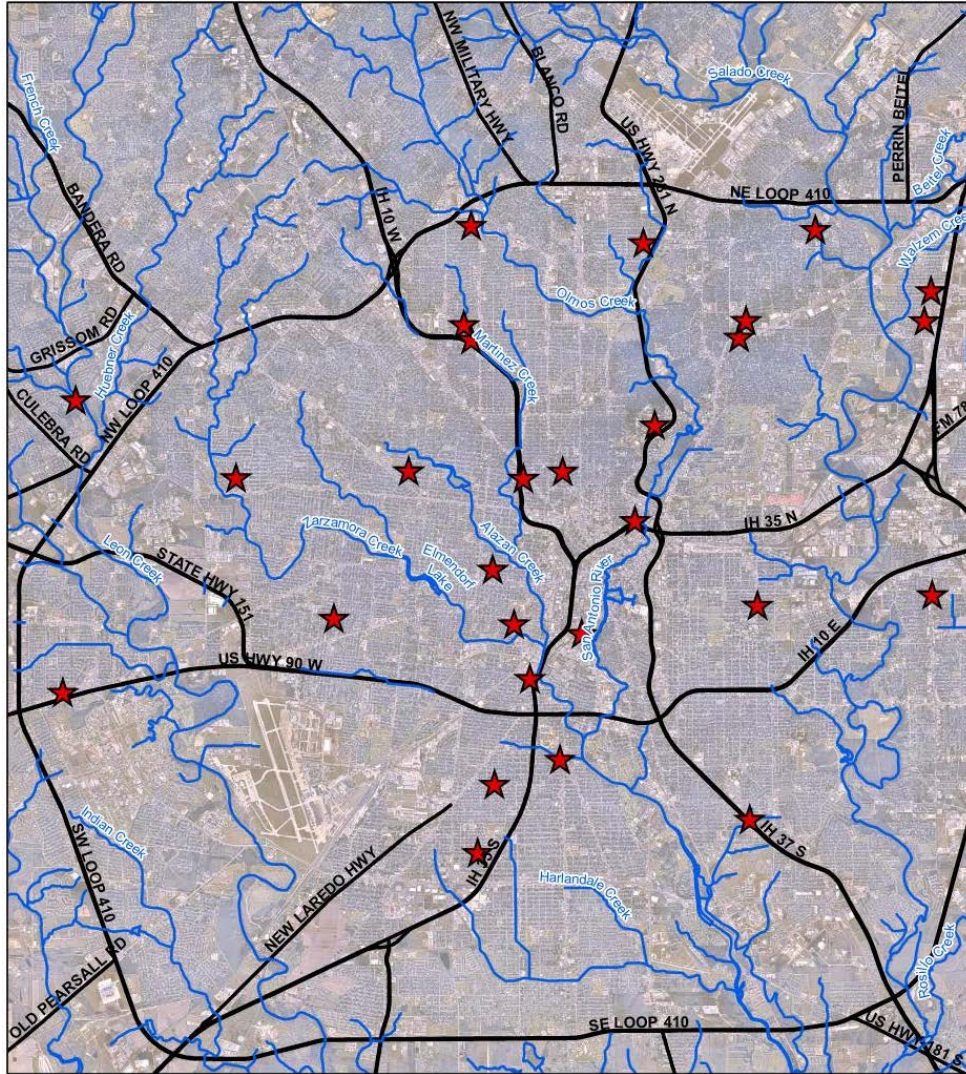
- Location:
 - Multiple locations throughout Western Basin
- Pipe Diameter:
 - 6-inch thru 36-inch
- Project Length:
 - Approximately 16,173 feet
- Rehab Method:
 - Pipeburst, Open Cut, and CIPP
- Estimated Construction Cost:
 - Not to exceed \$3,000,000

BPC Central Sewershed Package 6



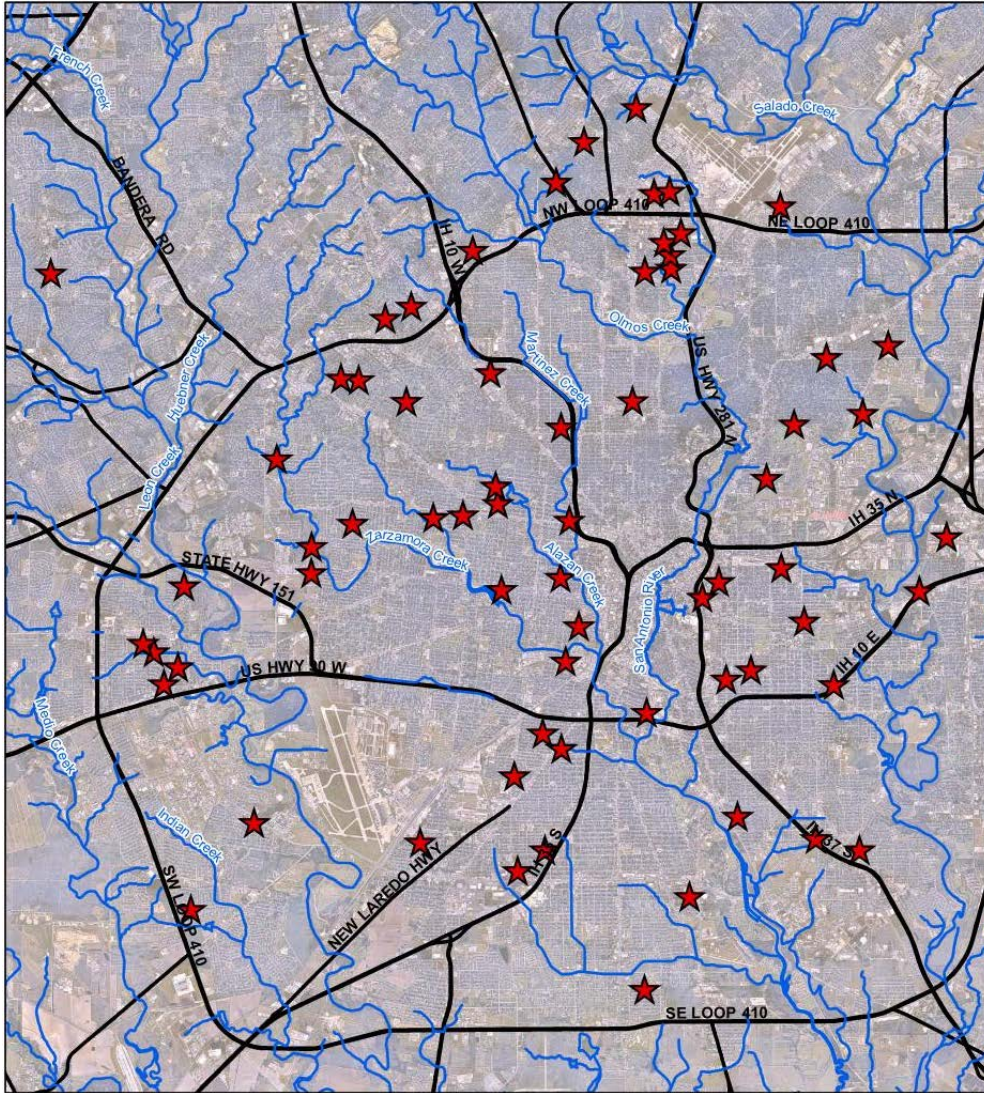
- Location:
 - Multiple locations throughout the Central Basin
- Pipe Diameter:
 - 8-inch thru 20-inch
- Project Length:
 - Approximately 17,204 feet
- Rehab Method:
 - Pipeburst, Open Cut, and CIPP
- Estimated Construction Cost:
 - Not to exceed \$3,200,000

Multiple Sewershed Package 16



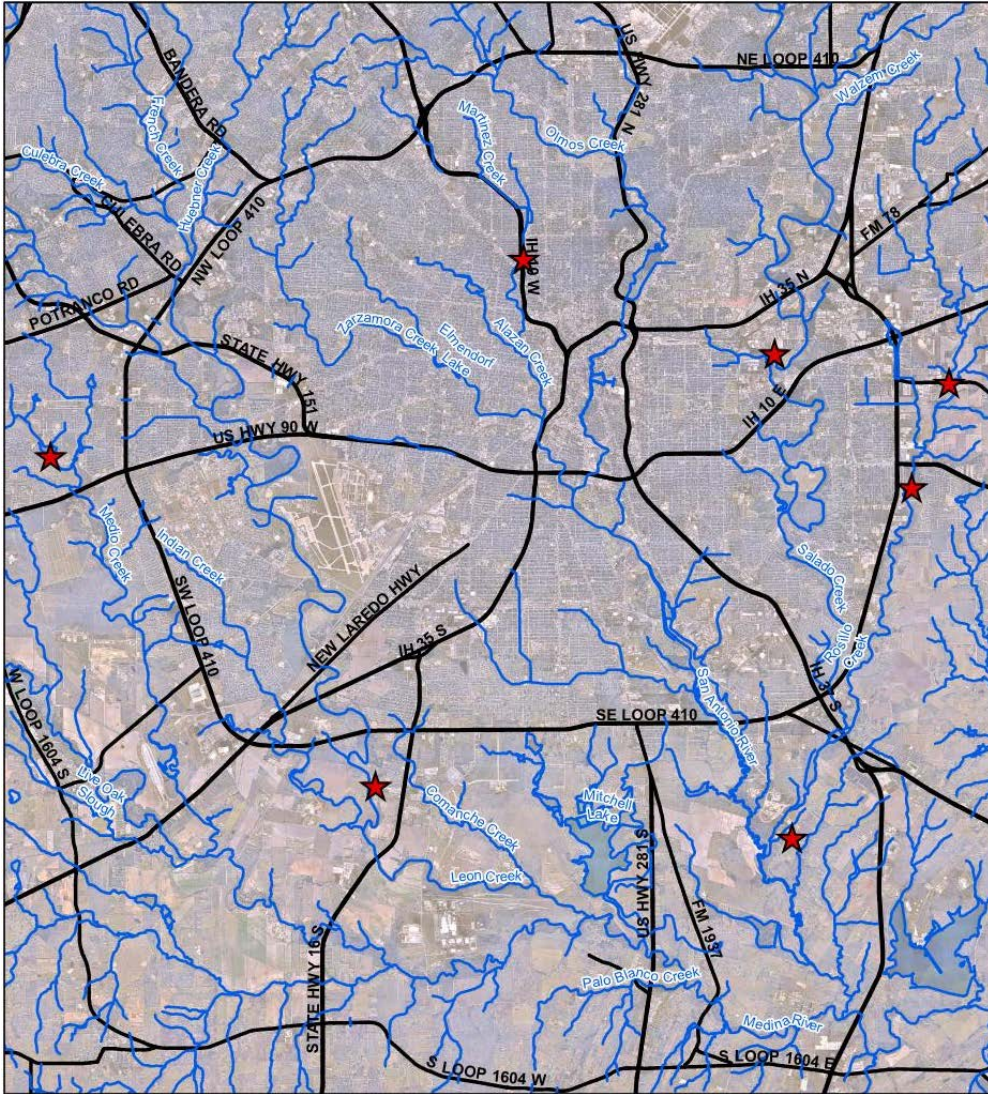
- Location:
 - Multiple locations throughout the City of San Antonio
- Pipe Diameter:
 - 8-inch thru 21-inch
- Project Length:
 - Approximately 14,982 feet
- Rehab Method:
 - CIPP
- Estimated Construction Cost:
 - Not to exceed \$1,924,000

Multiple Sewershed Package 17



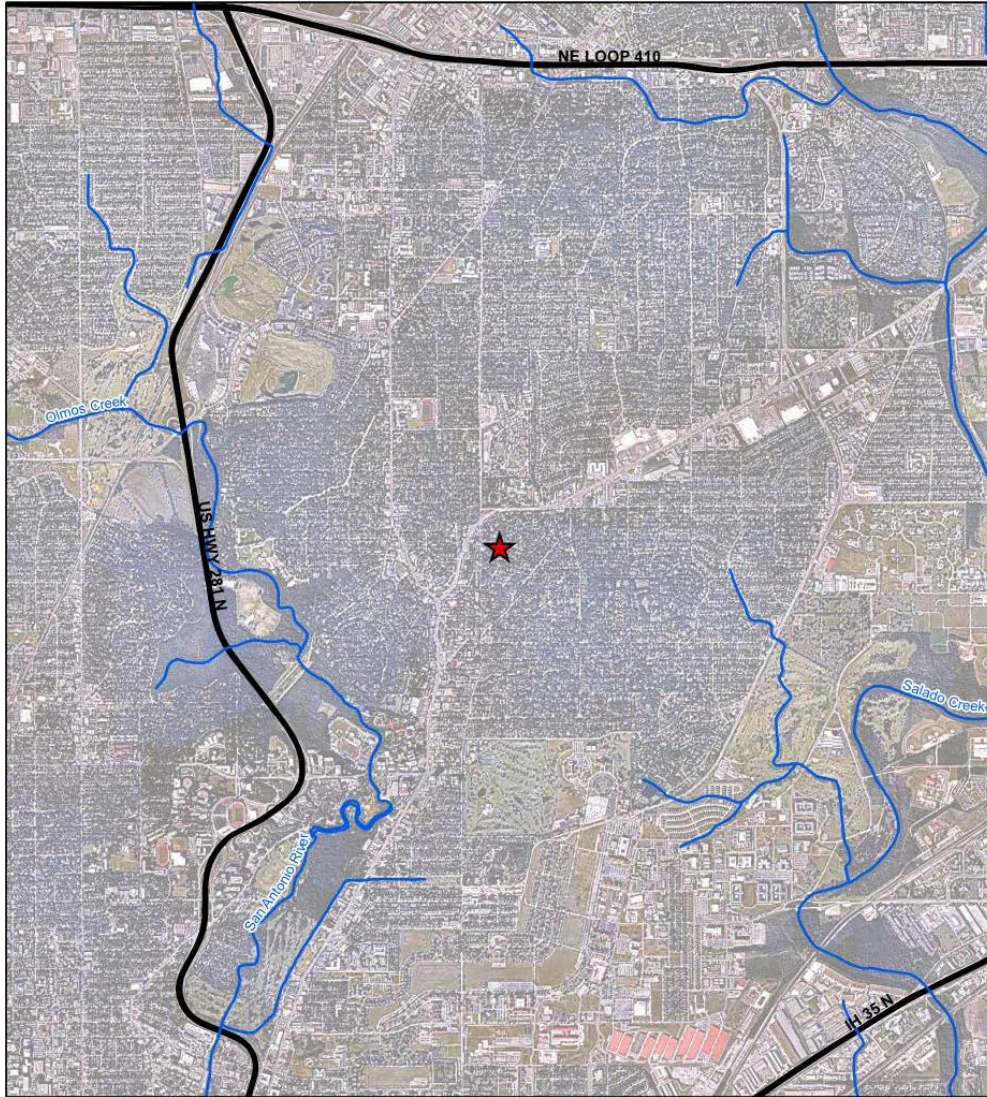
- Location:
 - Multiple locations throughout the City of San Antonio
- Pipe Diameter:
 - 6-inch thru 18-inch
- Project Length:
 - Approximately 22,779 feet
- Rehab Method:
 - Pipeburst and Open Cut
- Estimated Construction Cost:
 - Not to exceed \$5,504,000

Multiple Sewershed Package 18



- Location:
 - Multiple locations throughout the City of San Antonio
- Pipe Diameter:
 - 8-inch thru 72-inch
- Project Length:
 - Approximately 21,181 feet
- Rehab Method:
 - CIPP, Open Cut, and Abandon
- Estimate Construction Cost:
 - Not to exceed \$9,755,000

Central Sewershed SD Package 10 (Terrell Hills)



- Location:
 - In the City of Terrell Hills
- Pipe Diameter:
 - 6-inch thru 10-inch
- Project Length:
 - Approximately 3,459 feet
- Rehab Method:
 - CIPP
- Estimated Construction Cost:
 - Not to exceed \$1,514,000

Cost Estimates – Design Phase

- Consultant must develop opinions of probable construction costs (OPCC) for all phases of each project as per the recommendations of AACE International (formerly the Association for the Advancement of Cost Engineering) as described in AACE's document 56R-08: Cost Estimate Classification System – as Applied for the Building and General Construction Industries

Cost Estimates – Design Phase

- Consultants to develop OPCCs for each phase as follows:

Design Phase	Estimate Class	Expected Accuracy Range
30% Design	Class 3	L: -5% to -15% H: +10% to +20%
60% Design	Class 2	L: -5% to -10% H: +5% to +15%
90% Design	Class 1	L: -3% to -5% H: +3% to +10%
Bid Documents	Class 1	L: -3% to -5% H: +3% to +10%

Cost Estimates – Construction Phase

- Consultant must provide independent cost estimates based on the RS Means method of cost estimating by using the most current RS Means publication, with the appropriate adjustments for the location cost factors and the applicable overhead and profit percentages. These cost estimates are due on or before a RFP is requested from a SAWWS contractor.

Quality Management Plan

QMP

- Consultant will be required to develop a QMP
- QMP reviews to be performed by staff not involved in day to day
- QMP reviews are at different intervals during the design phases
- Constructability reviews with experienced personnel are required in the QMP to ensure project is buildable
- A QMP Certification Letter will be required

New TCEQ Requirements

Chapter 217.6 Transmittal Letter

- Ensures compliance with §217.6(c)
- Requests any variances from Chapter 217 and provides technical justification for said variance
- Discloses any innovative or nonconforming technologies in use
- Required to be signed and sealed

Key Considerations

- Schedule
- Methods of construction
- Coordination with other agencies (e.g., COSA, Bexar County, TxDOT, USACE, TCEQ, VIA etc.)
- Easements and ROW
- Identification of utilities (above and below ground)
- Environmental Site Assessment
- Surveys and topographic information
- Access points for construction and adequacy of easements
- Bypass plans and traffic control
- Plans, Specifications, and Cost Estimates

2019 Sanitary Sewer Overflow and Reduction Program (SSORP) Engineering Design Services

Antonio Leyva, P.E.

Engineering Manager

Christopher J. Jackson, P.E.

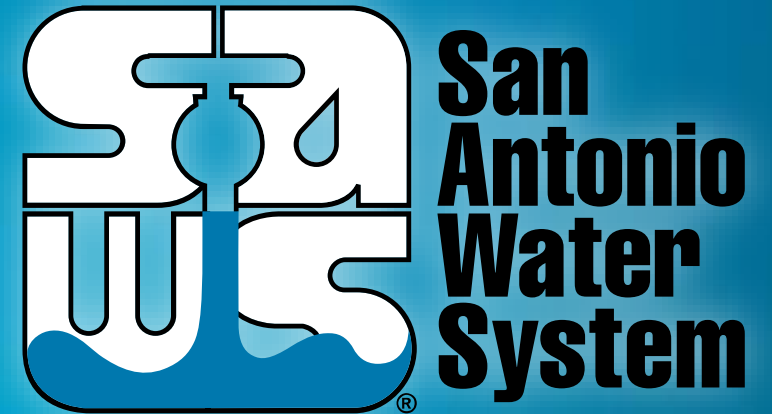
Project Engineer

Marisol V. Robles

Manager – SMWVB Program

Stella Manzello

Contract Administrator



Non-Mandatory Pre-Submittal Meeting

August 13, 2019

MAKING SAN ANTONIO
WATERFUL

